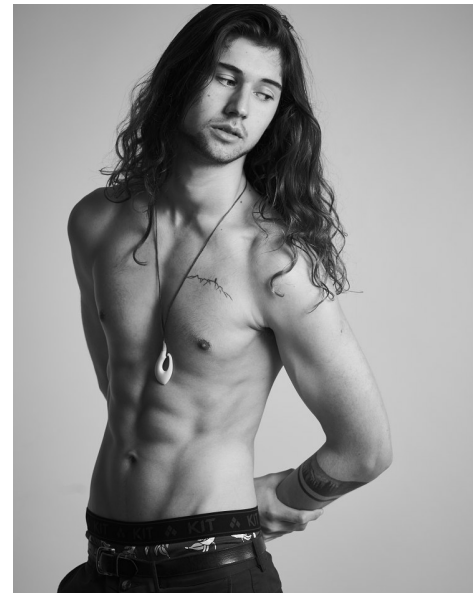




TOM POHIO

DEVELOPMENT

Height 6'4" Chest 38.5" Waist 32" Inseam 34" Collar 14.5" Shoe 47
EU/12.5 US/12 UK Hair Brown Eyes Blue/Green



KBM

kirsty@kirstybunny.co.nz +64 21 803 036
kirstybunny.co.nz