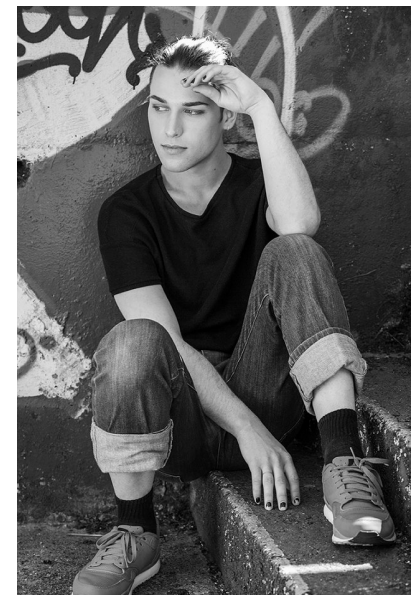
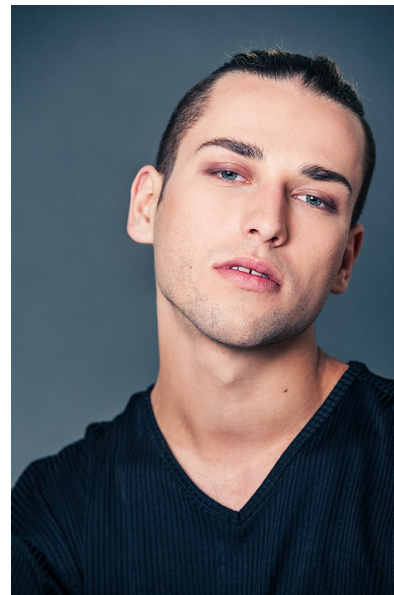


CHRISTOPH NUTSFORD

DEVELOPMENT

Height 5'10.5" Chest 36" Waist 33" Inseam 29.5" Collar 16" Shoe 45.5
EU/11 US/10.5 UK Hair Dark Brown Eyes Blue/Green



KBM

kirsty@kirstybunny.co.nz +64 21 803 036

kirstybunny.co.nz